

Series	SMART				
Model	S-IR-E10	S-IR-E19	S-IR-E25	S-IR-Q19	S-IR-Q25
Detector	Uncooled VOx Microbolometer				
Resolution, pixels	384×288/12μm			640×512/12μm	
Objective Lens (F1.0)	9.7mm	19mm	25mm	19mm	25mm
Field of View	26.7° ×20.2°	13.8° ×10.4°	10.5° ×7.9°	22.9° ×18.4°	17.5° ×14.0°
Visual Magnification	1~4	1.8~7.2	2.4~9.6	1.1~4.4	1.5~5.8
Laser Indicator (IRS)	650nm Class II Range >100m				
Spectral Band	8~14μm				
Eyepiece Diopter	-5~+5				
Eye Relief	23mm				
NETD	≤ 25mk@300K				
Display	0.39"OLED 1024x768				
Digital Zoom	1x、 2x、 4x				
Frame Rate.Hz	25Hz	50Hz	50Hz	50Hz	50Hz
Protection Rating	IP67				
Power Source	one 18650 battery (built in)				
Operating Time	≥ 7h	≥ 6h	≥ 6h	≥ 6h	≥ 6h
Interface	Type-C				
Weight (Including batteries)	≤ 251g			≤ 260g	
Dimensions	≤ 170×60×59mm				
Operating Temperature	-20℃ ~+55℃				
Detection Range (Human)	450m	900m	1200m	900m	1200m
Detection Range (Animal)	400m	800m	1000m	800m	1000m

COMPANY PROFILE

Chengdu Jingpin Night Vision Optoelectronics Technology Co., Ltd. (JPNVision), a subsidiary of Vital Optics Technology Co., Ltd. (Stock Code: SZ 300489), specializes in pioneering infrared thermal imaging technology. We offer a wide array of products, from infrared cores and thermal imaging modules to night vision and visual perception devices, catering to a global clientele alongside tailored solutions. Leveraging cutting-edge proprietary technology and a commitment to customer satisfaction, JPNVision represents the forefront of industry innovation. We are devoted to enhancing human sensory experiences and shaping a new era in the world of perception.

- +86 (028)66856688
- irvotex@votinfrared.com
- en.irvotex.com
- 9th Floor, Building E, Technology Incubation Park, 1480 North Section of Tianfu Avenue, Gaixin District, Chengdu, China



DEALER



FACEBOOK



LINKEDIN

*The above data and content are for reference only. In case of any changes or adjustments, no further notice will be given. The actual product shall prevail. All the content on this screen/page should not be construed as the benchmark parameters upon product delivery or as an implication of the product's usage effect.

IRVOTEX



BOUNDLESS OUTDOOR
EXPLORATION WITHIN YOUR REACH



SMART Series Thermal Imaging Monocular



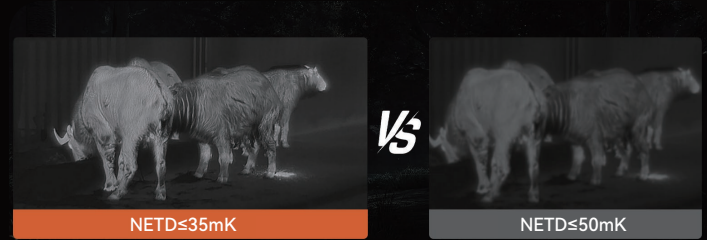
Small Size and Weight $\leq 260\text{g}$



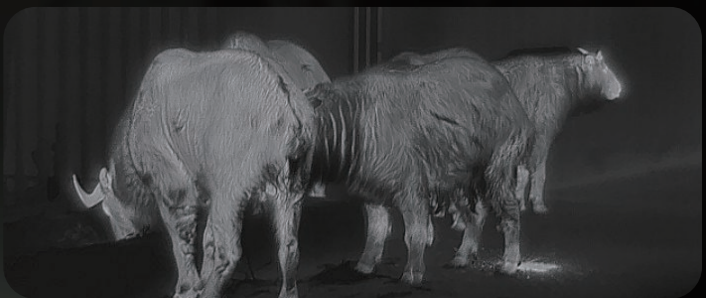
Working Time up to 6h



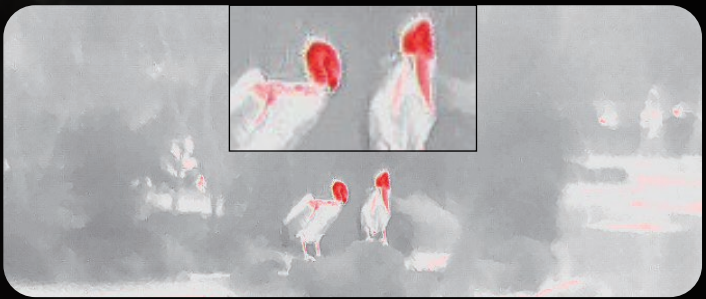
WiFi Transmission



NETD $\leq 35\text{mK}$



Resolution 384×288



Picture in Picture



Hot Track



IP67